



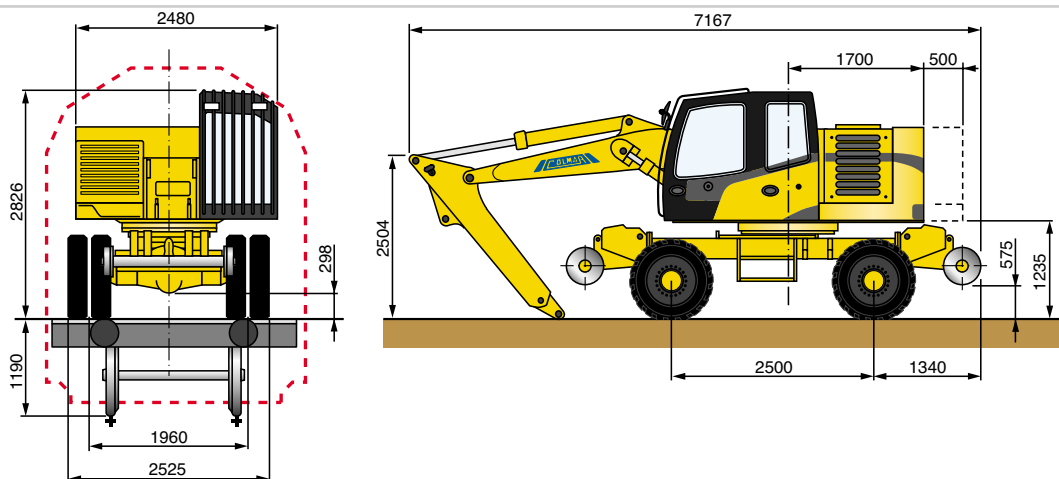
COLMAR rail/road loaders are used for the construction and maintenance of railway lines.

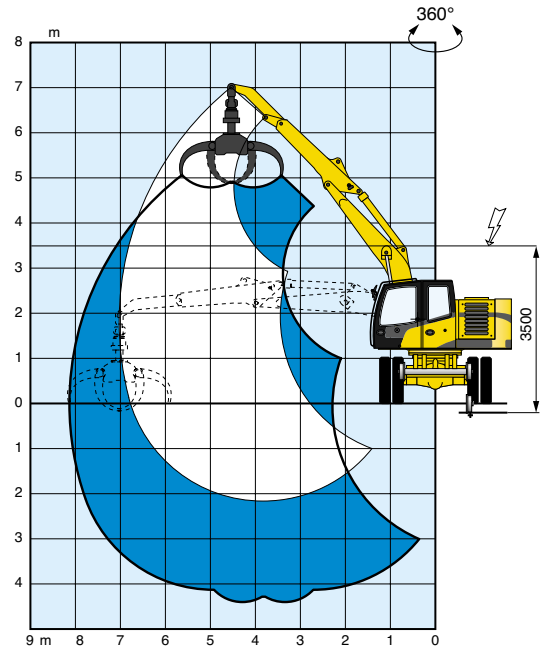
The machines can be equipped with different accessories: rail pincers, hydraulic or mechanical frame beam for moving sleepers; tamping unit; pincers for different usage; hydraulic hammer; hydraulic bush-grass cutter.

COLMAR rail/road loaders are made of a strong electro welded steel and actionned by hydraulic systems realized with high quality components.

The loaders are complete with security systems and are homologated to work in different countries.

Dimensions





ROAD/RAIL LOADERS

Weight of the machine	22 Ton
Max lifting load (Road - CD / CE)'	5000 daN (7 m) / 5000 daN (7 m)
Max lifting load (Rail - CD)'	5000 daN (7 m)
Telescopic counterweight	standard

TECHNICAL SPECIFICATIONS

Diesel engine (DEUTZ)	I.D. Turbo
Engine power	112 Kw - 2300 Rpm
Number of cylinders/cubic capacity	6 / 6472 cm ³
Cooling	air
Engine compartment	sound insulated
Engine supports	vibration damper

HYDRAULIC SYSTEM

Pumps	axial piston double pump - constant press. regulation
Max capacity	184 + 184 l/min
High pressure circuit	flexible hoses / steel
Pipe fittings	ORFS
Hydraulic oil cooling	air-oil heat exchanger
Tyres front and rear tyres	twin tyres 9,00x20 XZM
Service and emergency brake	hydr. pedal control / split circuit on the 4 wheels
Parking brake	hydraulic control by a lever in the cab
Brakes on the rail wheels	block braking
Steering	hydraulic / gear pump
Transmission	hydr. by variable displacement axial pistons pump
Hydraulic motor	radial piston hydr. motor on epicyclic reduction gear
Axels	with epicyclic reduction gears on wheels
Front rail axle	swinging / hydraulic cylinders for swinging lock
Front-rear rail boggies	independent / hydraulic control
Gear box	hydraulic with 3 speeds
1st gear; 2nd gear; 3rd gear	4 Km/h; 12 Km/h; 25 Km/h
Driving cab - Seat	steel sheet/sound insulated - adjust. anatomic seats
Fuel tank capacity	130 l
Total capacity hydraulic oil circuit	340 l

1) CD = Counterweight in CF = Counterweight out

Standard accessories Hydraulic rotator 360° for accessories, lifting hook, 4 wheels drive, electronic system for load control.

Optional Air conditioner, automatic air conditioner, radio, catalytic converter, electronic system for load control, electro hydraulic generator, magnetic plate, tracked model, rear vision electronic device, arm height mechanical limit system.

Road Loaders

HEIGHT (m)	OPERATING RANGE (m)			
	3.5	5	6	7
6	Long. CD	-	5500	-
	CF	-	5500	-
360°	CD	-	5500	-
	CF	-	5500	-
4.5	Long. CD	-	5500	4950
	CF	-	5500	4950
360°	CD	-	5500	4500
	CF	-	5500	4950
3	Long. CD	-	5950	5400
	CF	-	5950	5400
360°	CD	-	5900	4450
	CF	-	5950	4850
1.5	Long. CD	8900	6750	5850
	CF	8900	6750	5850
360°	CD	8900	5750	4400
	CF	8900	6200	5050
0	Long. CD	9500	7600	5850
	CF	9500	7600	5850
360°	CD	9350	5650	4400
	CF	9500	6500	5050

Lifting capacity on 360° rotation expressed without safety factors.

Rail Loaders

HEIGHT (m)	OPERATING RANGE (m)			
	3	5	6	7
6	Long. CD	-	5500	-
	360° CD	-	4550	-
4.5	Long. CD	-	5500	5100
	360° CD	-	4450	3650
3	Long. CD	-	5950	5700
	360° CD	-	4450	3400
1.5	Long. CD	8900	6750	5700
	360° CD	6800	4300	3350
0	Long. CD	9500	7600	5650
	360° CD	6650	4200	3250

Lifting capacity on 360° rotation expressed without safety factors.

Colmar reserves the right of amending the data contained in this brochure at any time.

COLMAR S.p.a.
 Headquarters Via Nazionale Adriatica n.539/593
 45031 ARQUA' POLESINE (RO) ITALY
 Ph. +39 0425 93 21 33 (Int.4) Fax +39 0425 46 50 52
www.colmarspa.com
colmarspa@colmarspa.com
Export Sales Department:
 Viale dei Colli Euganei, n.88 ap.5-6
 35041 Battaglia Terme (PD) - ITALY
 Ph.: +39 049 910 13 49 Fax : +39 049 911 41 63
www.colmarspa.com export@colmarspa.com

COLMAR USA, Inc.
 U.S.A.
 3790 Commerce Ct., Suite 100
 Wheatfield, New York 14120
1-800-537-5204
 Ph. 716 - 693 - 9877
 Fax 716 - 693 - 9869
www.colmarequipment.com
info@colmarequipment.com
sales@colmarequipment.com
service@colmarequipment.com

COLMAR UK Ltd.
 U.K.
 Unit 10, Wheel Forge Way
 Ashburton Park
 Ashburton Road West, Trafford Park
 Manchester
 M17 1EH
 Ph. **0161 848 8902**
 Fax 0161 848 8903
www.colmarspa.com
colmaruk@colmarspa.com

OOO COLMAR BOCTOK
 RUSSIA 115088 Moscow, Yuzhnoportovaya ul.7
 Ph. +7 095 5405538 Fax +7 095 7100848
www.colmarspa.com info@oocolmar.ru

COLMAR S.p.a. CHINA OFFICE
 CHINA Pride of Times Building,
 Suite No. 1003 Xin Hua Rd. 4, Yu Zhong District,
 400010 Chongqing City, PRC
 Ph. +86 23 63707815 Fax +86 23 63707780
www.colmarspa.com jia@colmarspa.com