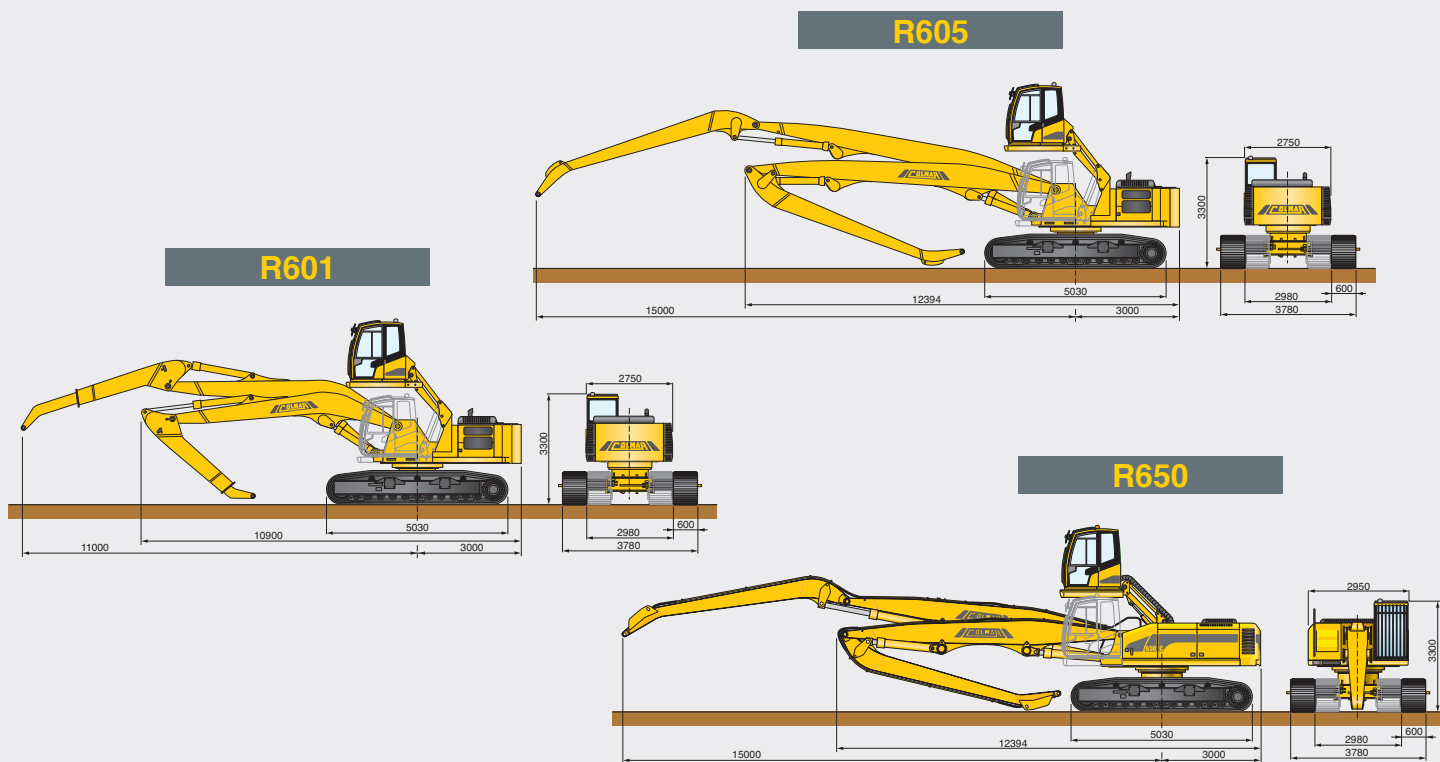


TRACKED INDUSTRIAL LOADERS



R403	R601	R605	R650
27 ton	36 ton	39 ton	39 ton
3000 daN / 12 m	6590 daN / 11 m	3200 daN / 15 m	3300 daN / 15 m
fixed L: 12 m	telescopic L: max. 11 m	fixed L: 15 m	fixed L: 15 m
turbo-charged direct injection (Perkins)	turbo-charged direct injection (Perkins)	turbo-charged direct injection (Perkins)	turbo-charged direct injection (Perkins)
129 kW - 2200 Rpm	186 kW - 2200 Rpm	186 kW - 2200 Rpm	186 kW - 2200 Rpm
6 / 6600 c.c.	6 / 6600 c.c.	6 / 6600 c.c.	6 / 6600 c.c.
cooling liquid	cooling liquid	cooling liquid	cooling liquid
sound insulated	sound insulated	sound insulated	sound insulated
damper monted	damper monted	damper monted	damper monted
N°2 axial piston, N°2 gear	N°3 axial piston, N°2 gear	N°3 axial piston, N°2 gear	N°2 axial piston, N°2 gear
350 bar	300 bar	300 bar	330 bar
flexible hoses / tubes	flexible hoses / tubes	flexible hoses / tubes	flexible hoses / tubes
ORFS	ORFS	ORFS	ORFS
air/oil cooler	air/oil cooler	air/oil cooler	air/oil cooler
variable track model	variable track model	variable track model	variable track model
variable disp. axial pistons	variable disp. axial pistons	variable disp. axial pistons	variable disp. axial pistons
0-1,9 km/h	0-2,5 km/h	0-2,5 km/h	0-2,5 km/h
0-3,7 km/h	0-3,7 km/h	0-3,7 km/h	0-3,7 km/h
pantograph hydraulic elevation	pantograph hydraulic elevation	pantograph hydraulic elevation	pantograph hydraulic elevation
anatomically adjustable	anatomically adjustable	anatomically adjustable	anatomically adjustable
220 L	310 L	310 L	450 L
240 L	400 L	400 L	500 L
MCG	MCG	MCG	MCG
AC - R - ACG	AC - R - ACG	AC - R - ACG	AC - R - ACG
EG (8,5 kW)	EG (11 - 15 kW)	EG (11 - 15 kW)	EG (11 - 15 kW)
MP (Ø1130 mm)	MP (Ø1250 - 1450 mm)	MP (Ø1250 - 1450 mm)	MP (Ø1250 - 1450 mm)

MCG = Manual centralized greasing system, ACG = Automatic centralized greasing system.