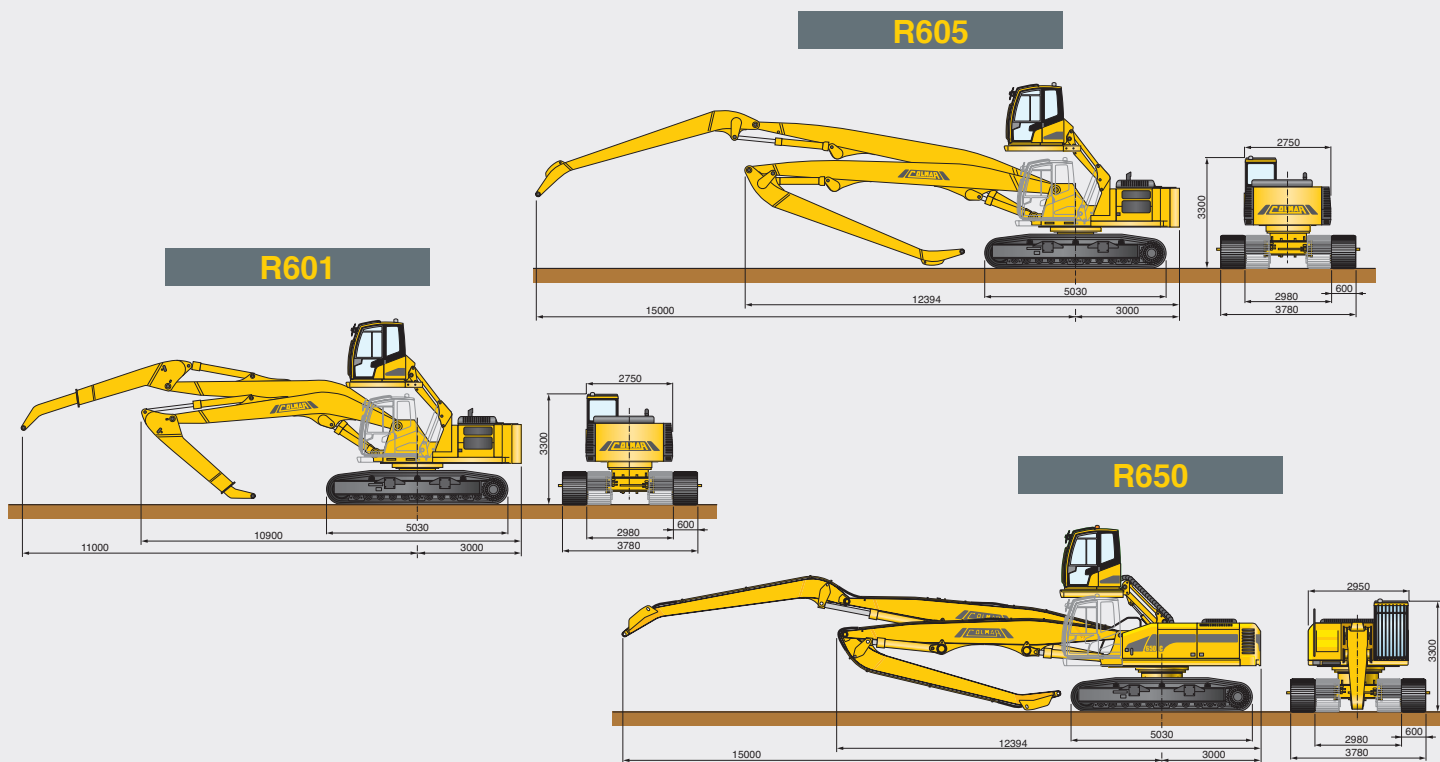


TRACKED INDUSTRIAL LOADERS



| R403 | R601 | R605 | R650 |
|--|--|--|--|
| 27 ton | 36 ton | 39 ton | 39 ton |
| 3000 daN / 12 m | 6590 daN / 11 m | 3200 daN / 15 m | 3300 daN / 15 m |
| fixed L: 12 m | telescopic L: max. 11 m | fixed L: 15 m | fixed L: 15 m |
| turbo-charged direct injection (Perkins) | turbo-charged direct injection (Perkins) | turbo-charged direct injection (Perkins) | turbo-charged direct injection (Perkins) |
| 129 kW - 2200 Rpm | 186 kW - 2200 Rpm | 186 kW - 2200 Rpm | 186 kW - 2200 Rpm |
| 6 / 6600 c.c. | 6 / 6600 c.c. | 6 / 6600 c.c. | 6 / 6600 c.c. |
| cooling liquid | cooling liquid | cooling liquid | cooling liquid |
| sound insulated | sound insulated | sound insulated | sound insulated |
| damper monted | damper monted | damper monted | damper monted |
| N°2 axial piston, N°2 gear | N°3 axial piston, N°2 gear | N°3 axial piston, N°2 gear | N°2 axial piston, N°2 gear |
| 350 bar | 300 bar | 300 bar | 330 bar |
| flexible hoses / tubes | flexible hoses / tubes | flexible hoses / tubes | flexible hoses / tubes |
| ORFS | ORFS | ORFS | ORFS |
| air/oil cooler | air/oil cooler | air/oil cooler | air/oil cooler |
| variable track model | variable track model | variable track model | variable track model |
| variable disp. axial pistons | variable disp. axial pistons | variable disp. axial pistons | variable disp. axial pistons |
| 0-1,9 km/h | 0-2,5 km/h | 0-2,5 km/h | 0-2,5 km/h |
| 0-3,7 km/h | 0-3,7 km/h | 0-3,7 km/h | 0-3,7 km/h |
| pantograph hydraulic elevation | pantograph hydraulic elevation | pantograph hydraulic elevation | pantograph hydraulic elevation |
| anatomically adjustable | anatomically adjustable | anatomically adjustable | anatomically adjustable |
| 220 L | 310 L | 310 L | 450 L |
| 240 L | 400 L | 400 L | 500 L |
| MCG | MCG | MCG | MCG |
| AC - R - ACG | AC - R - ACG | AC - R - ACG | AC - R - ACG |
| EG (8,5 kW) | EG (11 - 15 kW) | EG (11 - 15 kW) | EG (11 - 15 kW) |
| MP (Ø1130 mm) | MP (Ø1250 - 1450 mm) | MP (Ø1250 - 1450 mm) | MP (Ø1250 - 1450 mm) |

MCG = Manual centralized greasing system, ACG = Automatic centralized greasing system.