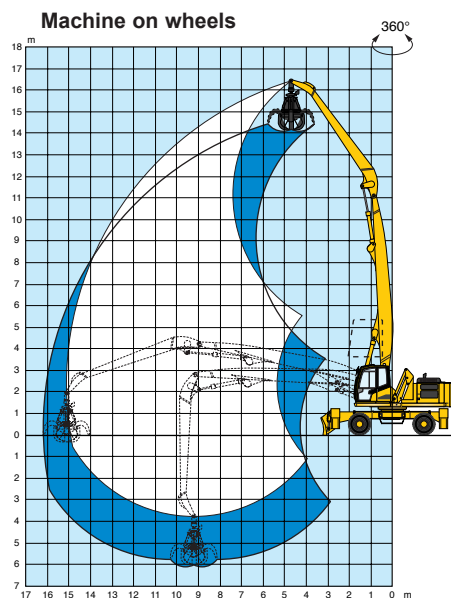
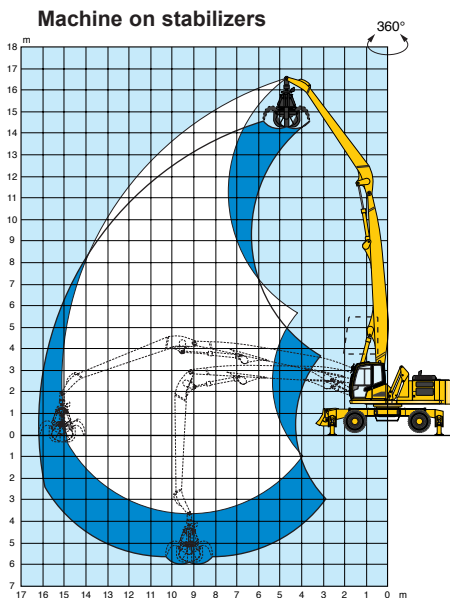




Lifting capacity diagram(s)



Machine on stabilizers

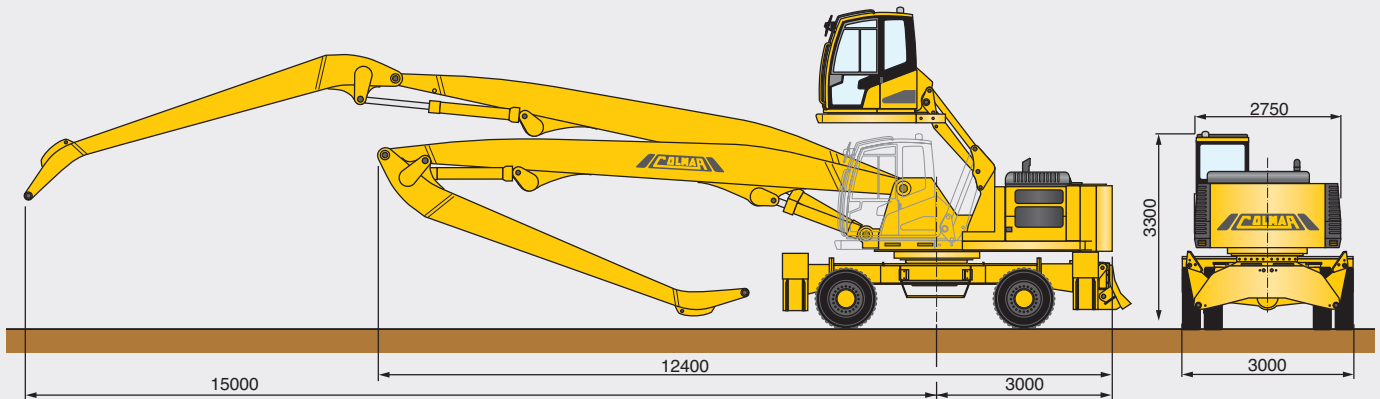
Height (m)	Reach (m)						
	5.3	6	8	10	12	14	15
14	-	-	7470	-	-	-	-
12	-	-	7220	6930	-	-	-
10	-	-	5960	5820	6030	-	-
8	-	-	6340	6030	5240	-	-
6	-	8610	7070	6460	5450	-	-
4	-	10610	8060	7030	5440	4210	-
2	14690	12600	9070	7240	5240	4100	3660
0	-	13820	9650	6950	5070	4010	-
-2	-	14030	9380	6760	4960	3970	-

Lifting capacity around 360° expressed in DaN without safety factor

Machine on wheels

Height (m)	Reach (m)						
	5.3	6	8	10	12	14	15
14	-	-	7470	-	-	-	-
12	-	-	7220	6000	-	-	-
10	-	-	5960	4890	4400	-	-
8	-	-	6340	4740	3360	-	-
6	-	8610	6510	4460	3210	-	-
4	-	9070	5890	4110	3000	2200	-
2	9270	7850	5260	3750	2790	2080	1800
0	-	7070	4780	3450	2600	1980	-
-2	-	6730	4490	3250	2480	1930	-

Lifting capacity around 360° expressed in DaN without safety factor



		605
Operating characteristics		
	Machine weight	39 ton
	Max lifting arm capacity/boom extension	3660 daN / 15 m
	Loading boom	fixed L: 15 m
Technical characteristics		
	Diesel engine	Turbo-charged D. I. (Perkins)
	Engine power	186 kW - 2200 Rpm
	N° of cylinders / cubic capacity	6 / 6600 c.c.
	Cooling system	cooling liquid
	Engine compartment	sound insulated
	Engine supports	damper monted
Hydraulic system		
	Pumps	N° 3 axial piston, n° 2 gear
	Operating pressure	300 bar
	High pressure system	flexible hoses / tubes
	Pipe fittings	ORFS
	Oil cooling	air/oil cooler
	Front and rear tyres	N°8 solid beads tires, size: 12.00/20
	Service and emergency brakes	pedal operated hydraulics
	Parking brake	mechanical
	Power steering	gear pump
	Transmission	4 wheel drive
	Hydraulic motor	variable disp. axial pistons
	Axles	epicyclic reduction gear (hubs)
	Swing axle locking	hydraulic
	Speed first gear	0-5 km/h
	Speed second gear	0-12 km/h
	Sound insulated cabin	pantograph hydraulic elevation
	Seat	anatomically adjustable
	Fuel tank capacity	310 L
	Hydraulic oil tank capacity	400 L
Accessories		
	Standard	FB - RS - FS - 4WD - MCG
	Optional	AC - R - ACG EG (11 - 15 kW) MP (Ø1250 - 1450 mm)


AC = Air conditioner, R = Radio, EG = Electro hydraulic generator, FB = Front hydraulic blade, MP = Magnetic plate, FS = Front hydraulic stabilizers, RS = hydraulic rear stabilizers, 4WD = 4 wheel drive, MCG = Manual centralized greasing system, ACG = Automatic centralized greasing system.

Colmar reserves the right to amend the data contained within this brochure at any time.

 **COLMAR S.P.A.**
Headquarters
Via Nazionale Adriatica n.539/593
45031 Arquà Polesine (RO) ITALY
Tel. +39 0425 93 21 33 (Int. 4)
Fax +39 0425 46 50 52
www.colmarspa.com
colmarspa@colmarspa.com

 **COLMAR USA, Inc.**
U.S.A.
3790 Commerce Ct., Suite 100
Wheatfield, New York 14120
1-800-537-5204
Ph. 716 - 693 - 9877
Fax 716 - 693 - 9869
www.colmarequipment.com
info@colmarequipment.com
sales@colmarequipment.com
service@colmarequipment.com

 **COLMAR UK Ltd.**
U.K.
Unit 10, Wheel Forge Way
Ashburton Park
Ashburton Road West, Trafford Park
Manchester M17 1EH
Ph. **0161 848 8902**
Fax 0161 848 8903
www.colmarspa.com
colmaruk@colmarspa.com

 **OOO COLMAR БОКТОК**
RUSSIA
115088 Moscow,
Yuzhnoportovaya ul.7
Ph. +7 095 5405538
Fax +7 095 7100848
www.colmarspa.com
info@oocolmar.ru



ISO 9001 CERT. N.1579

